

# Safety Alert

## Trip leads to Broken Hand.

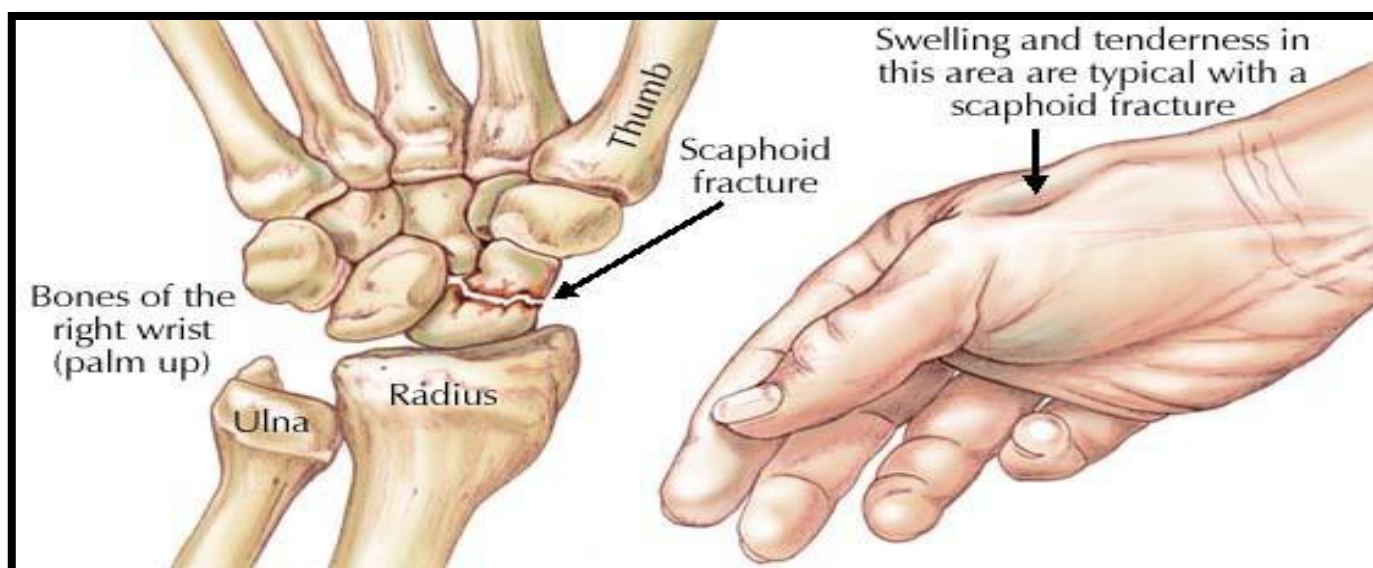


On Thursday 8th July at 8:30 am, an operative had parked next to a cattle grid on a remote single-track road. He got out of his vehicle to talk to an approaching driver. After talking to the driver, he went to turn forgetting he was standing on a cattle grid, resulting in him falling.

He outreached his arm to break his fall, but unfortunately this resulted in him fracturing the Scaphoid Bone in his left hand.

This incident has resulted in considerable pain for the Injured Party (IP) and he is unable to drive for 5 weeks, meaning he is unable to return to normal duties.

It has also meant that the company has had to report this incident to the HSE and is the first RIDDOR reportable incident in the company's history.



This safety alert has been prepared by the RSTA.  
For further information regarding this safety alert please email:  
[rory@rsta-uk.org](mailto:rory@rsta-uk.org) or phone 07817 116420  
Alert No: 08 / 2021

## Findings

- The narrow road without many opportunities to park vehicles led to the IP standing on the cattle grid.
- The injured Person (IP) had not fully assessed his surroundings, choosing to stand on the cattle grid which is an uneven surface with multiple gaps and therefore multiple trip hazards.

## Lesson Learnt.

- Thorough checks must be made regarding foot placement, do not step where you have not LOOKED.
- ASSESS your surroundings.
- If you are unsure an area is safe to work in STOP & CHECK!

**Always stand on firm level ground.**